

Welcome to the West Area Planning Committee

- This planning committee meeting is held in public but it is not a public meeting.
- There will be an opportunity for the public to address the committee on each application.
- If you wish to speak for or against a planning application, you need to have either requested it in advance, or hand in one of the available speaker forms, or speak to the clerk.
- Information on meeting protocol and conduct at the committee is set out in the Code of Practice.
- This is in the committee agenda just before the first planning application report.

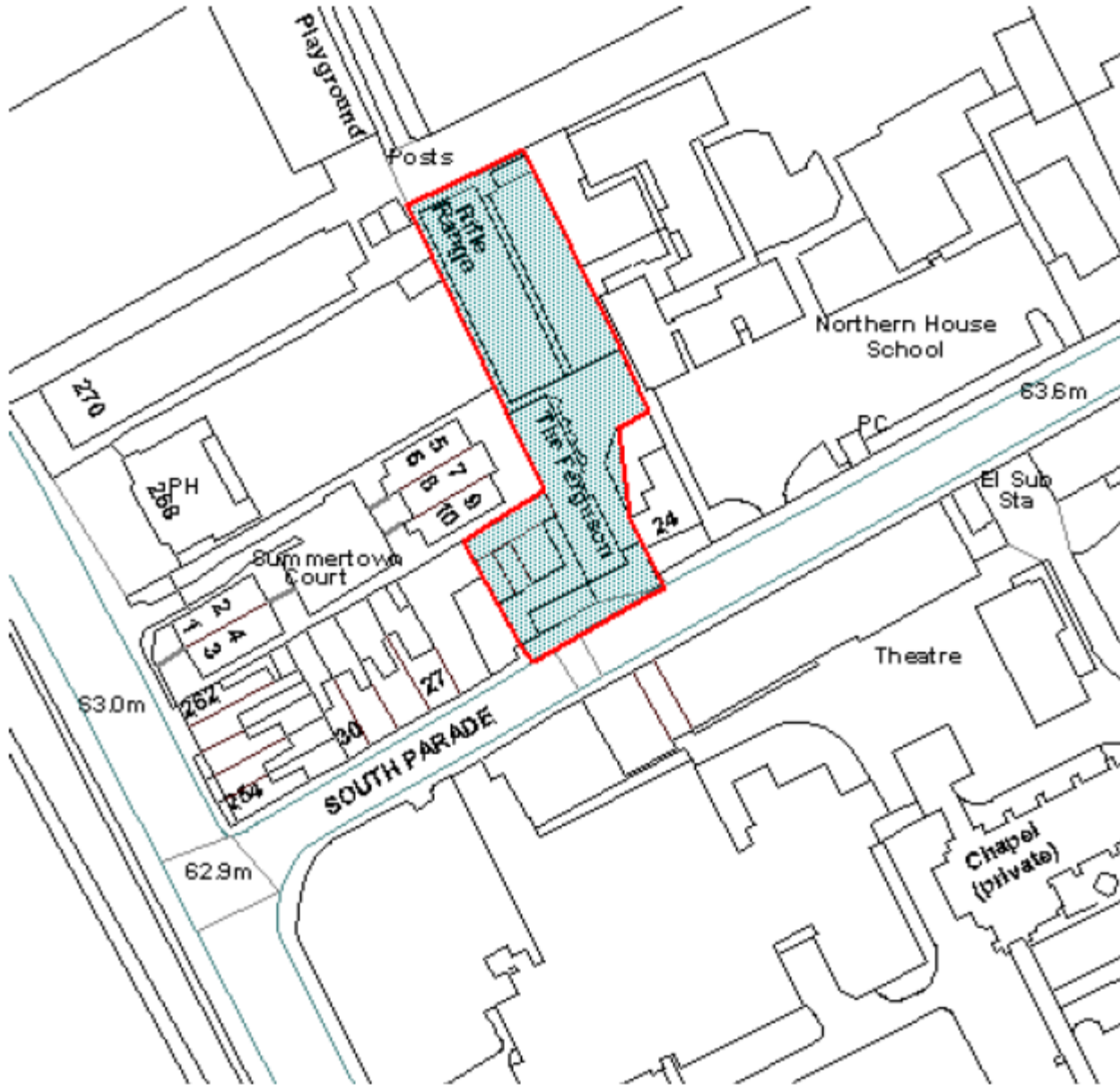


Site Location Plan

www.oxford.gov.uk



100



Views from South Parade



www.oxford.gov.uk



**OXFORD
CITY
COUNCIL**



Views from South Parade



102

www.oxford.gov.uk

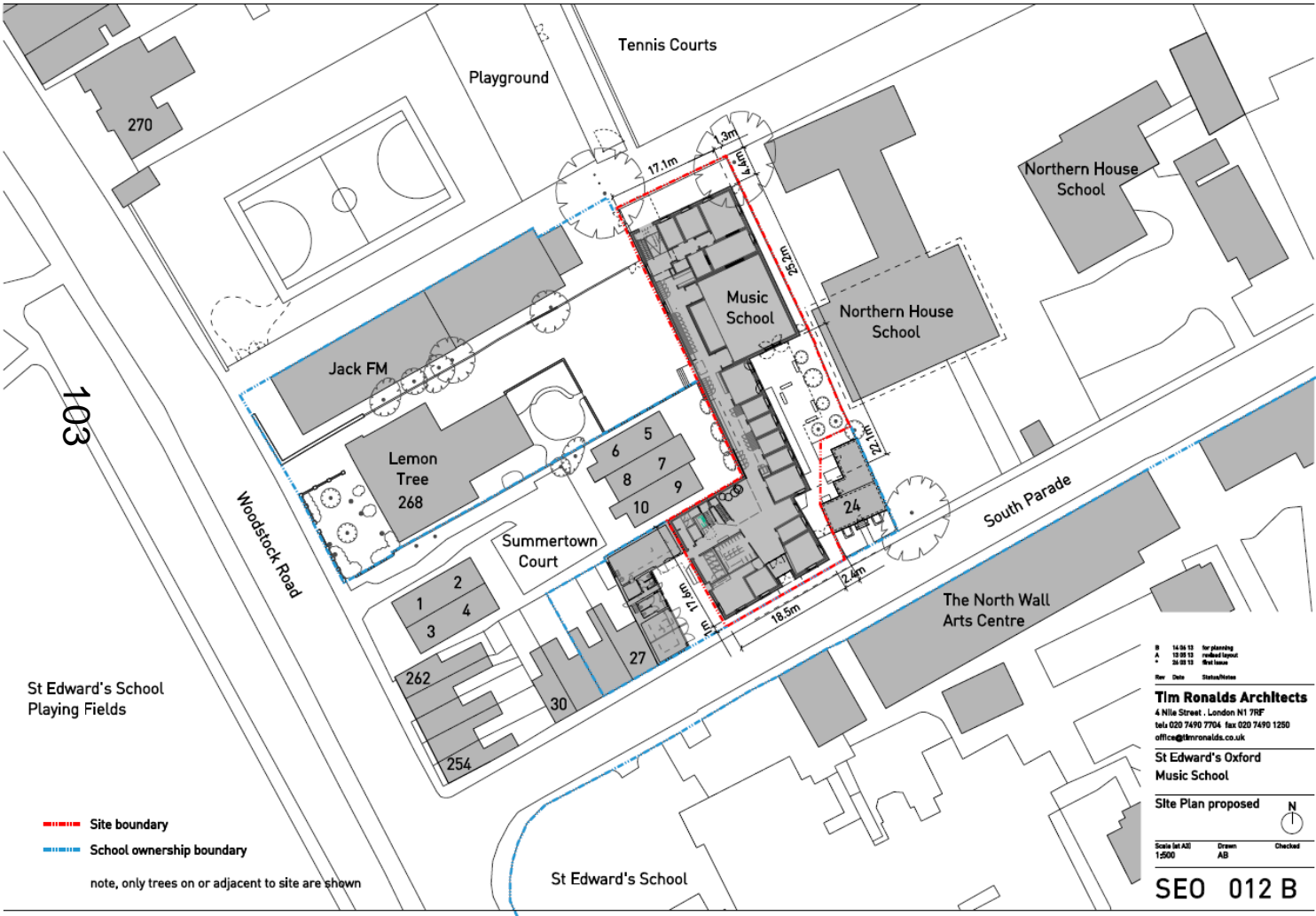


**OXFORD
CITY
COUNCIL**



Approved Site Layout Plan

www.oxford.gov.uk



St Edward's School
Playing Fields

- - - - - Site boundary
- - - - - School ownership boundary

note, only trees on or adjacent to site are shown

■ 14.06.11 for planning
 A 15.09.11 council report
 * 20.09.11 final issue
 Rev Date Status/Notes
Tim Ronalds Architects
 4 Nile Street, London N1 7RF
 tels 020 7490 7704 fax 020 7490 1250
 office@timronalds.co.uk

St Edward's Oxford
Music School

Site Plan proposed N
↑

Scale set All 1:2500	Drawn AB	Checked
-------------------------	-------------	---------

SEO 012 B



Approved and Proposed Elevations



South elevation as approved

APPROVED



South elevation as proposed

PROPOSED





East elevation as approved

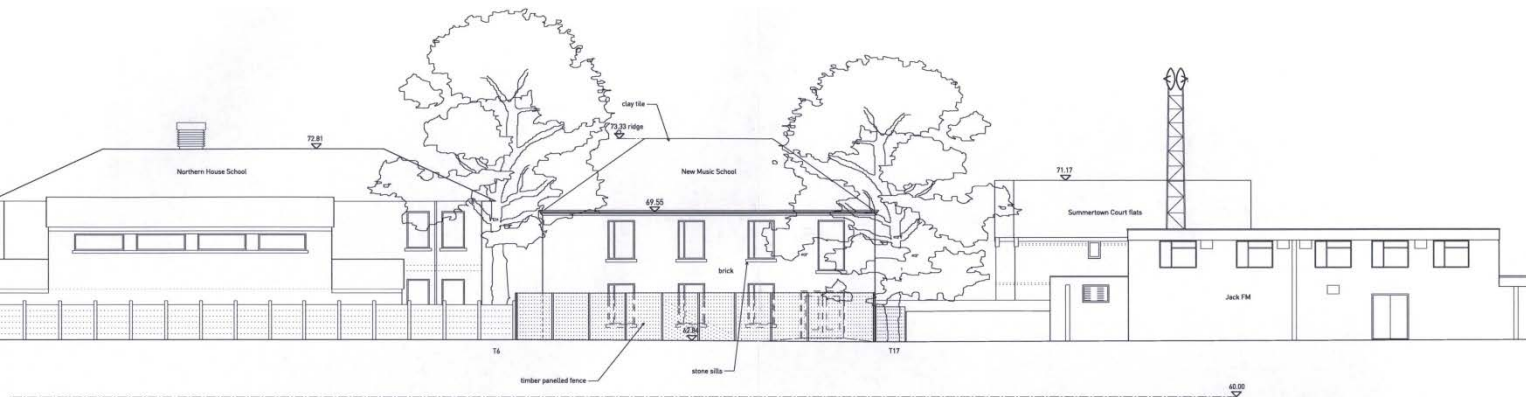
APPROVED

105



East elevation as proposed

PROPOSED



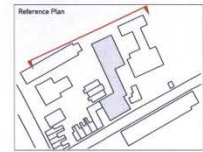
North elevation as approved

APPROVED



North elevation as proposed

PROPOSED



Rev	Date	Status/Notes
B	09.07.14	for planning - elevations revised
A	21.05.14	for planning - elevations revised
+	27.03.14	for planning - elevations revised

Tim Ronalds Architects
 4 Nile Street, London N1 7RF
 tel: 020 7490 7704
 office@timronalds.co.uk

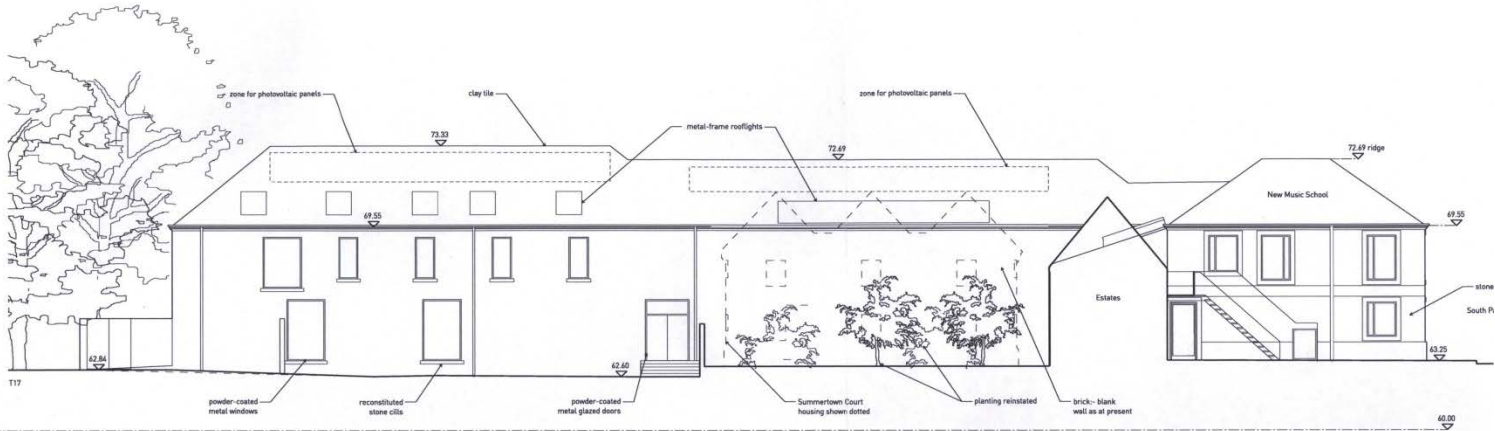
**St Edward's Oxford
 Music School**

**North Elevation
 Approved and proposed**

Scale (at A1)	Drawn	Checked
1:100	BB	KB

SEO 126 B

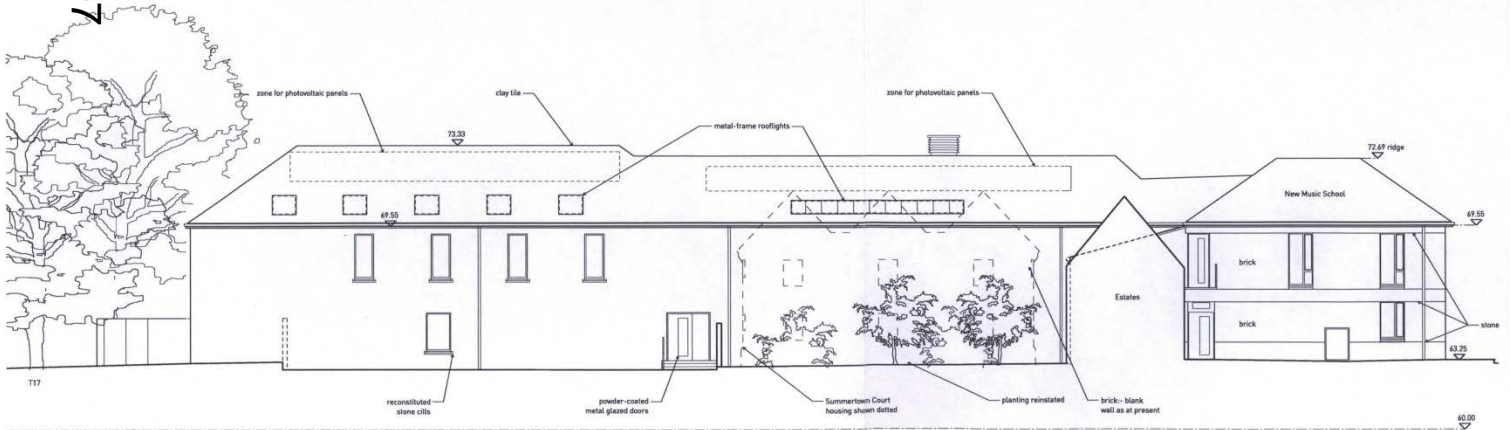




West elevation as approved

APPROVED

107



West elevation as proposed

PROPOSED



This page is intentionally left blank